

# 危害马尾松的一种新叶蜂 (膜翅目: 扁叶蜂科)

萧刚柔 曾垂惠

摘要 本文记述腮扁叶蜂属一新种即马尾松腮扁叶蜂(*Cephalcia pinivora*)。本种在重庆市永川市、大足县等地危害马尾松很严重。

关键词 膜翅目 广腰亚目 扁叶蜂科 腮扁叶蜂属

马尾松腮扁叶蜂(*Cephalcia pinivora* Xiao et Zeng) 新种

雌虫 黄褐色, 具光泽。头部及须黄褐; 触角深黄, 尖端5节黑; 单眼三角及眼黑。胸部黄褐; 中胸前盾片, 中胸盾片大部分, 中胸小盾片, 中胸后背片, 中胸前侧片下端, 中胸后侧片, 中胸基腹板黑; 后胸小盾片, 后胸后背板黑。翅透明; 翅痣黑; 翅脉深黄; 翅痣基部下面有一近长方形灰黑色斑。足黄褐, 转节腹面部分黑。腹部黄褐, 三角区黑。唇基中央隆起, 两侧凹下; 额隆起, 非结节状; 中窝卵圆形; 侧缝及横缝明显, 冠缝隐晦;  $OOL \cdot POL \cdot OCL = 1.7 \cdot 1 \cdot 1.7$ ; 单眼后区长·宽 =  $1.1 \cdot 1$ ; 无后颊脊。单眼后区及眼后区刻点较密, 中等大小, 点间距约等于点本身直径; 触角侧区刻点粗稀, 呈皱纹状; 中胸背面刻点较稀; 中胸前侧片刻点较密; 腹部背板无刻点。头部及前胸背板细毛黄色, 中等长。体长14 mm; 触角29节。

雄虫 黑色, 具光泽。头部及胸部黑; 中胸基腹板黄。翅痣黑褐; 翅脉除前缘脉为黄黑色外, 均黑色。腹部背板黑, 其两侧黄; 腹板后缘黄色。唇基中央微隆起, 成结节状; 中窝不明显;  $OOL \cdot POL \cdot OCL = 2.5 \cdot 1 \cdot 3.3$ 。体长13 mm; 触角29节。握器及副阳茎见图1-1; 阳茎瓣见图1-2。第9节腹板见图1-3。其余颜色及构造同雌虫。

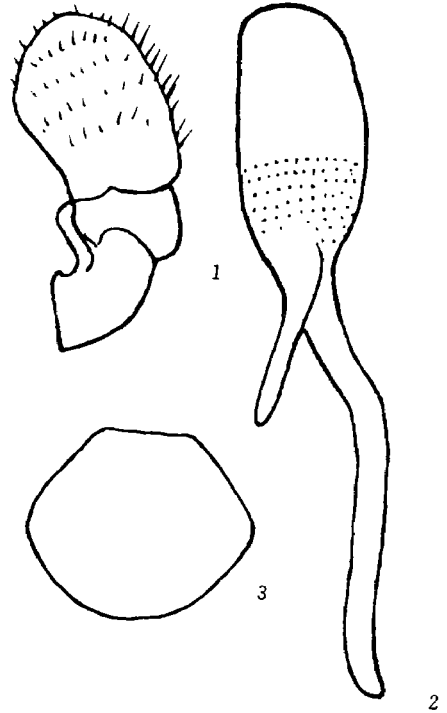


图1 马尾松腮扁叶蜂

1. 握器及副阳茎, 2. 阳茎瓣, 3. 雄虫第9节腹板

正模, 重庆市大竹县, 1997. . 10, 杨兴伟采。副模: 4 , 5♂♂, 同正模; 重庆市永川市, 1996. . 17, 4 , 6♂♂, 陈松采。

寄主: 马尾松(*Pinus massoniana* Lamb.)

本新种与昆嵛山腮扁叶蜂(*Cephalcia kunyushanica* Xiao) 近似<sup>[1,2]</sup>, 但前者雌虫单眼三角黑色; 前翅翅痣基部下有一近长方形灰黑斑; 翅痣以外翅非烟褐色; 后翅前端也非烟褐色, 可与之相区别。

模式标本保存在中国林业科学研究院森林保护研究所昆虫标本室。

### 参 考 文 献

- 1 萧刚柔. 中国腮扁叶蜂亚科四新种(膜翅目: 扁叶蜂科). 林业科学, 1987, (昆虫专辑): 1~4.
- 2 萧刚柔, 黄孝运, 周淑芷, 等. 中国经济叶蜂志( ). 陕西杨陵: 天则出版社, 1992. 23~24.

## A New Species of the Genus *Cephalcia* (Hymenoptera: Pamphiliidae) from China

Xiao Gangrou Zeng Chuihui

**Abstract** In this paper a new species of the genus *Cephalcia* is described. *Cephalcia pinivora* is a serious pest of *Pinus massoniana* Lamb. in Yongchuan and Dazu Counties, Chongqing Municipality.

*Cephalcia pinivora* Xiao et Zeng new species

Female—Yellowish brown, shining. Head and palpi yellowish brown; antennae deep yellow with apical five segments black; ocellar triangle and eyes black. Thorax yellowish brown; prescutum, most of mesoscutum, mesoscutellum, posttergite, basal part of mesoepisternum adjacent to mesobasisternum, mesoepimeron, mesobasisternum black; metascutellum, postnotum black. Wings hyaline; stigma black; veins deep yellow; below base of stigma a nearly oblong grey black patch present. Legs yellowish brown, ventral part of trochanters partly black. Abdomen yellowish brown; triangular area black. Clypeus swollen in middle, concave in lateral parts; frons swollen, not tuberculate; median fovea oval; lateral sutures and transverse suture distinct, coronal suture obsolete; OOL ·POL ·OCL = 1.7 ·1 ·1.7; length of postocellar area ·its width = 1.1 ·1; postgenal carina absent. Punctures on postocellar area and postocular area denser, moderate sized, distance between punctures about equal to diameter of a puncture; paraantennal fields with coarse punctures; punctures on back of mesonotum sparser and those on mesoepisternum finer and denser; terga without punctures. Head and prothorax with yellowish moderate long pubescence. Body length 14 mm; antenna 29 segments.

Male—Black, shining. Head and thorax black; mesobasisternum yellow. Stigma

blackish brown; veins black except for costa which is yellowish black. Abdominal terga black with lateral parts yellow; posterior margins of sterna yellow. Clypeus slightly swollen in middle; frons swollen, tuberculate; median fovea indistinct; OOL ·POL ·OCL = 2.5 ·1 ·3.3. Body length 13 mm; antenna 29 segments. Harpes and parapenis as in fig. 1-1; penis valve as in fig. 1-2; ninth sternum as in fig 1-3. Other characters the same as for female.

Holotype, , Dazu County , Chongqing Municipality, 1997. . 10, Xingwei Yang leg. Paratypes: 4 , 5♂♂, same as for holotype; Yongchuan County, Chongqing Municipality, 1996. . 17, 4 , 6♂♂, Song Chen leg.

Host plant: *Pinus massoniana* Lamb.

Remarks: The new species resembles *Cephalcia kunyushanica* Xiao, but differs from the latter in female with ocellar triangle black, below base of stigma a nearly oblong grey black patch present, about apical half of fore and hind wings not infuscated.

All the type specimens are deposited in the Insect Collection of the Institute of Forest Protection, the Chinese Academy of Forestry.

**Key words** Hymenoptera Symphyta Pamphiliidae *Cephalcia*

Xiao Gangrou, Professor (The Research Institute of Forest Protection, CAF Beijing 100091); Zeng Chuihui (Experiment Station of Forest Insect and Disease Control, Yongchuan City).

## 欢迎订阅1999年《江苏林业科技》

《江苏林业科技》为国内外公开发行的综合性的林业科学技术刊物。1974年创刊。现为全国中文核心期刊、《中国学术期刊(光盘版)》入编期刊、《中国林业文摘》核心期刊、江苏省优秀期刊。1996年荣获第二届全国优秀科技期刊三等奖。

《江苏林业科技》主要刊登良种选育、育苗造林、园林绿化、林副特产、森林经营、森林保护、调查设计、林业机械、野生动物等方面的学术论文、科研报告、经验总结,以及林业新成果、新技术,有较强的指导性、技术性、实用性,是林业科研、教学工作者、管理部门及广大林业战线职工不可少的参考资料。欢迎订阅,欢迎投稿。

《江苏林业科技》为季刊,中国刊号:CN 32—1236/S。国际标准刊号:ISSN 1001—7380。可发布广告信息,广告经营许可证号120352。每期定价4.00元,全年订费16.00元。现已开始办理1999年订阅手续,需订阅者请将订款汇至南京中华门外东善桥省林科所内本刊编辑部,邮编211153。电话:(025) 2740362, 2890115, 2890290。由银行或邮局汇寄均可。

开户银行:南京市农行秦淮办新街口一分,户名:江苏省林业科学研究所,帐号:033151801000122。

《江苏林业科技》编辑部