

文章编号:1001-1498(2005)01-0084-02

中国纽扁叶蜂属一新纪录种(膜翅目,扁叶蜂科)

萧刚柔¹, 陈天林²

(1. 中国林业科学研究院森林生态环境与保护研究所,北京,100091; 2. 辽宁省海城市森林保护站,辽宁 海城 114200)

摘要:本文记述纽扁叶蜂属中国一新纪录种——珍珠梅纽扁叶蜂 *Neurotoma sibirica* Gussakovskij。其中卵、幼虫及蛹(浸渍标本)的形态均为首次记载。

关键词:膜翅目;扁叶蜂科;纽扁叶蜂属;叶蜂;珍珠梅

中图分类号:S763.31

文献标识码:A

A New Record of The Genus *Neurotoma* (Hymenoptera, Pamphiliidae) to China

XIAO Gangrou¹, CHEN Tianlin²

(1. Research Institute of Forest Ecology, Environment and Protection, CAF, Beijing 100091, China;

2. Station Forest Protection, Haicheng County of Liaoning Province, Haicheng 114200, Liaoning, China)

Abstract: A new record of the genus *Neurotoma*, *Neurotoma sibirica* Gussakovskij to China was reported in this paper. The external morphology of the egg, larva and pupa was recorded for the first time.

Neurotoma sibirica Gussakovskij, 1935, a new record to China

Female: body black, shining; the following areas pale yellowish-white: a spot near the top of inner-orbit, tegula, spots near two sides of posterior margins of abdominal terga 4~6, central part of posterior margin of sternum 6, basal half of anal vein (A1) of forewing, apical part of trochanter and femur, posterior part of tibia; anterior parts of fore legs and middle legs and posterior part of tarsus brown, tarsi of hind legs blackish brown; teeth of mandible deep brown; pterostigma and veins except the basal half of 1A of forewing black, shining; wing subhyaline; wing membrane grayish, outer margin, anterior part of posterior margin gray. Head behind eyes almost not constricted; clypeus with anterior margin truncate, central part convex, both sides concave; frontal carina sharp; median fovea round, deep; lateral sutures and transverse suture distinct; length of postocellar area about as long as its width; postgenal carina distinct; scutum of mesothorax roundly convex; mesoscutellum deeply concave; cell C of forewing pilose. Punctures on clypeus and frons rather dense; distance between punctures greater than diameter of an ocellus; paraantennal fields shining; punctures of temple and postocellar field larger and rare, distance between punctures greater than diameter of an ocellus; punctures of tergum of mesothorax rare, punctures of mesepisternum dense; abdominal terga with very fine punctures. Apex of sawsheath see fig. 1.

Body length about 11 mm; forewing length about 8 mm; antenna 22-segmented, attaining only to abdomen.

Male: the male is similar to the female in coloration, structure (except external genitalia) and puncture. External genitalia see fig. 2, 9th abdominal sternum see fig. 3. body length about 7 mm; forewing length about 5 mm; antenna 22-segmented, attaining only to abdomen.

Egg: oblong, yellowish white, length about 4 mm, width about 2 mm.

Larva: head brownish; thorax and abdomen yellow; anterior part of antenna, coxa of thoracic leg, anterior part of trochanter, anterior part of subanal appendage, convex line of suranal plate black; prothoracic shield brownish black; apex of lacinia with 5 setae; second segment of subanal appendage with 4 setae at anterior ventral surface; apical part of suranal plate with hairs; body length about 15 mm.

Pupa: yellowish white; compound eye and ocellus black; antenna extending to 2nd segment of abdomen; length of female pupa

收稿日期: 2004-07-09

作者简介: 萧刚柔(1918—),男,湖南洞口人,研究员。

about 15 mm, of male pupa about 9 mm.

Distribution: Haicheng County, Liaoning Province, China; Korea (GW, HB); E. Siberia, Sakalin; Japan (Hokkaido); Kurile Is; (Shikotan Is).

Host plant: *Sorbaria sorbifolia* (L.) A. Br.; *Sorbaria sorbifolia* var. *stillipila* Maxim. (Shinohara, 1980); Rosaceae.

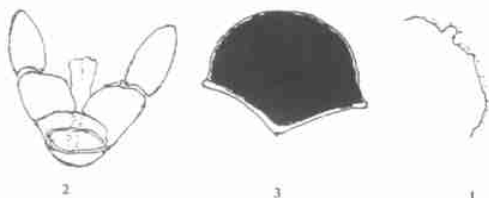
Chinese material examined: 8 12, 2003. .08, Chen Tianlin leg; 14 4, 2004. .23, Chen Tianlin leg; Haicheng County, Liaoning Province, China.

Key words: Hymenoptera; Pamphiliidae; *Neurotoma*; Sawfly; *Sorbaria sorbifolia* (L.) A. Br.

纽扁叶蜂属 *Neurotoma* Konow 1897 全世界已知 20 种; 中国已知 2 种, 本种是第 3 种, 是中国一新纪录种。以下成虫形态是根据 Gussakovskij 的俄文描述, 查对中国标本并补充一些特征, 而加以报道的^[1-7]。

珍珠梅纽扁叶蜂 *Neurotoma sibirica* Gussakovskij, 1935, 中国新纪录种

雌虫: 体黑色, 具光泽; 以下各部分淡黄白色: 近内眼眶顶端斑点, 翅基片, 腹部背板 4~6 近后缘两端斑点, 腹板 6 后缘中央部分, 前翅臀脉 1 (1A) 基半部, 转节及腿节前端, 胫节后端; 前足及中足胫节前端以及跗节后端褐色, 后足跗节黑褐色; 上颚齿深褐色; 翅痣及翅脉 (除前翅 1A 基半部) 黑色, 具光泽; 翅半透明, 翅膜带灰色, 外缘及后缘前半部灰色。眼后头部几乎不收缩; 唇基前缘截形, 中央隆起, 两侧凹下; 额脊尖削; 中窝圆形, 深; 侧缝及横缝明显; 单眼后区长与宽约相等; 后颊脊明显; 中胸盾片呈圆形隆起, 中胸小盾片凹入较深; 前翅前缘室具细毛。唇基及额刻点较密, 刻点间距不及一个单眼直径长; 触角侧区光滑; 眼上区及单眼后区刻点稀疏而较大, 刻点间距大于一个单眼直径长; 中胸背板刻点稀疏, 中胸前侧片刻点稠密; 腹部背板具很细刻点。锯鞘尖端见图 1-1。



1. 雌虫锯鞘尖端 2. 雄虫外生殖器背面观 3. 雄虫第 9 节腹板

图 1 珍珠梅纽扁叶蜂 *Neurotoma sibirica* Guss.

体长约 11 mm; 前翅长约 8 mm; 触角 22 节, 长仅达腹部。

雄虫: 体色, 结构 (除外生殖器), 刻点一如雌虫。

外生殖器见图 1-2; 第 9 节腹板见图 1-3。体长约 7 mm; 前翅长约 5 mm; 触角 22 节, 长仅达腹部。

卵: 椭圆形, 黄白色, 长约 4 mm, 宽约 2 mm。

幼虫: 头浅褐色; 胸部及腹部黄色; 触角前端, 胸足基节, 转节前端, 肛下附器前端, 肛上叶隆起线黑色; 前胸背板斑点褐黑色; 内颚叶外端具 5 根较粗而直刚毛; 肛下附器第 2 节前腹面具 4 根刚毛。肛上叶末端具细毛; 体长约 15 mm。

蛹: 黄白色; 复眼及单眼黑色; 触角达于腹部第 2 节; 蛹体长约 15 mm, 蛹体长约 9 mm。

分布: 中国辽宁省海城市; 俄罗斯远东地区, 日本北海道, 千岛群岛, 韩国。

寄主: 珍珠梅 *Sorbaria sorbifolia* (L.) A. Br.; 国外记载为 *Sorbaria sorbifolia* var. *stillipila* Maxim.; 属蔷薇科 Rosaceae。

中国检验标本: 8 12, 2003-05-08, 陈天林采; 14 4, 2004-04-23, 陈天林采; 中国辽宁省海城市。

参考文献:

- [1] Gussakovskij V V. Insects Hymenoptera, Chalastogastra [J]. Fauna SSSR, 1935, 2(1): 162
- [2] Lorenz H, Kraus M. Die larvasystematik der Blattwespen (Tenthredinoidea und Megalodontoidea) [M]. Akademie-Verlag, Berlin, 1957
- [3] Middlekauff W W. The North American sawflies of the genera *Acantholyda*, *Cephalcia*, and *Neurotoma* (Hymenoptera, Pamphiliidae) [M]. University of California Press, Berkeley & Los Angeles, 1958
- [4] Shinohara A. East Asian species of the genus *Neurotoma* (Hymenoptera: Pamphiliidae) [J]. Trans Shikoku Ent Soc, 1980, 15: 87 ~ 117
- [5] Shinohara A. Records of *Neurotoma atrata* and *N. sibirica* (Hymenoptera, Pamphiliidae) from the Russian Far East [J]. Japanese Jour Ent, 1992, 60 (4): 826
- [6] Shinohara A, Byun B K. Pamphiliidae sawfly genera *Neurotoma* and *Onycholyda* (Hymenoptera, Pamphiliidae) of Korea [J]. Ins. Koreana, 1993, 10: 75 ~ 91
- [7] 萧刚柔. 中国扁叶蜂 (膜翅目: 扁叶蜂科) [M]. 北京: 中国林业出版社, 2002: 123